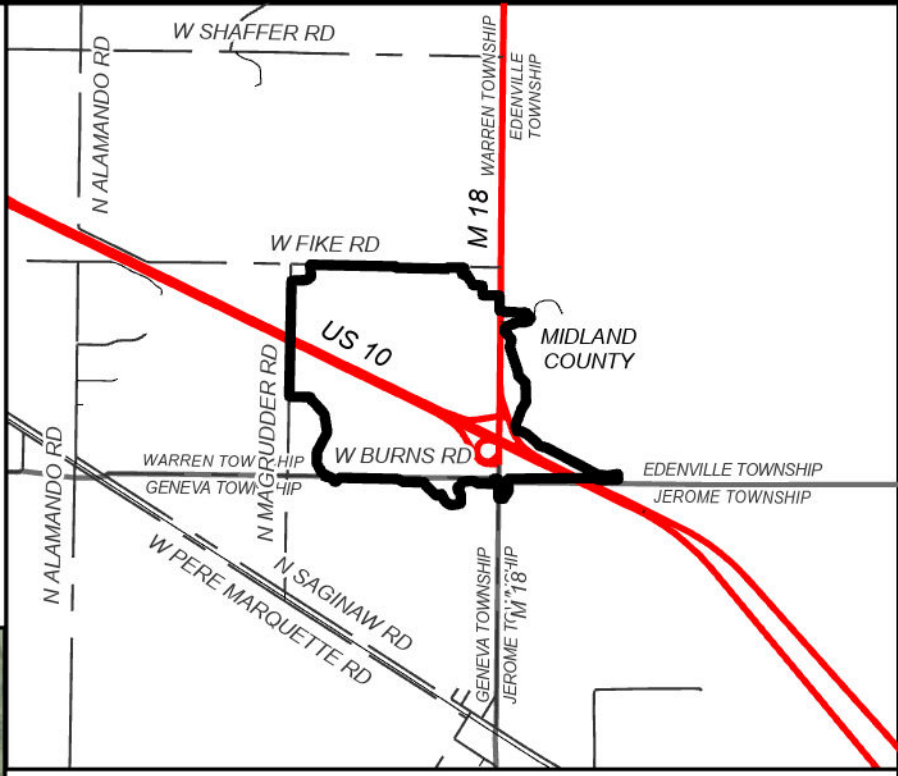
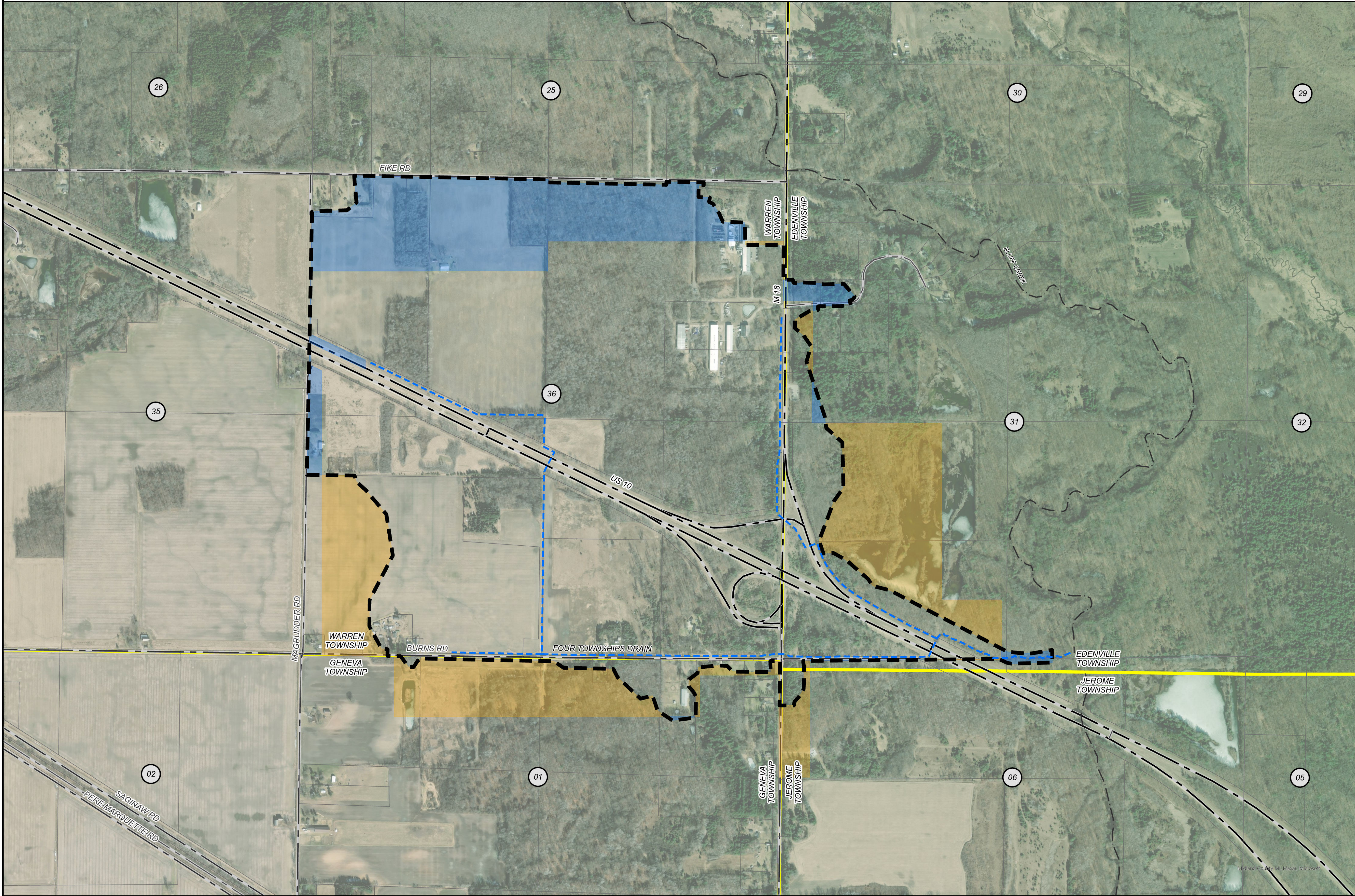


FOUR TOWNSHIPS DRAIN
MIDLAND COUNTY, MICHIGAN
MIDLAND COUNTY DRAIN COMMISSIONER - JOSEPH SOVA



AREA MAP
NOT TO SCALE

N

0 250 500 1,000 FEET

LEGEND

- DRAINAGE DISTRICT BOUNDARY
- - - APPROXIMATE DRAIN LOCATION
- - - APPROXIMATE LOCATION OF OUTLET WATERCOURSE
- LANDS ADDED
- LANDS REMOVED
- MUNICIPALITY BOUNDARIES
- PARCELS
- STATE ROADS
- COUNTY ROADS
- LOCAL ROADS
- RAILROAD
- # SECTION

DRAINAGE DISTRICT BREAKDOWN

MIDLAND COUNTY	
EDENVILLE TOWNSHIP	74.36 AC.
GENEVA TOWNSHIP	15.66 AC.
JEROME TOWNSHIP	2.02 AC.
WARREN TOWNSHIP	582.63 AC.
TOTAL ACREAGE IN DISTRICT	
674.67 AC.	
LENGTH OF DRAIN	
FOUR TOWNSHIPS DRAIN	
16,475.77 FT.	

BY	MARK	REVISIONS	DATE
THE WORK REPRESENTED BY THIS DRAWING WAS DESIGNED BY THE ENGINEER FOR THIS SPECIFIC APPLICATION AND SPECIFIC LOCATION DESCRIBED HEREON IN ACCORDANCE WITH THE CONDITIONS PREVALENT AT THE TIME THE DESIGN WAS DONE. THE ENGINEER DOES NOT GUARANTEE AND WILL NOT BE LIABLE FOR ANY OTHER LOCATION, CONDITION, DESIGN OR PURPOSE.			
FOUR TOWNSHIPS DRAIN MIDLAND COUNTY, MICHIGAN			
DRAINAGE DISTRICT MAP			
		SAGINAW'S OFFICE 230 S Washington Ave Saginaw, MI 48607 Tel: 989-754-4747 www.SpicerGroup.com	
DE. BY: LLG	CH. BY: LDO	PROJECT NO.	
DR. BY: LLG	APP. BY: LDO	137529SG2024	
STDS.	SHEET 1 OF 1	DR 1	
DATE: MARCH 2025	FILE NO.		
SCALE: 1"=500'			